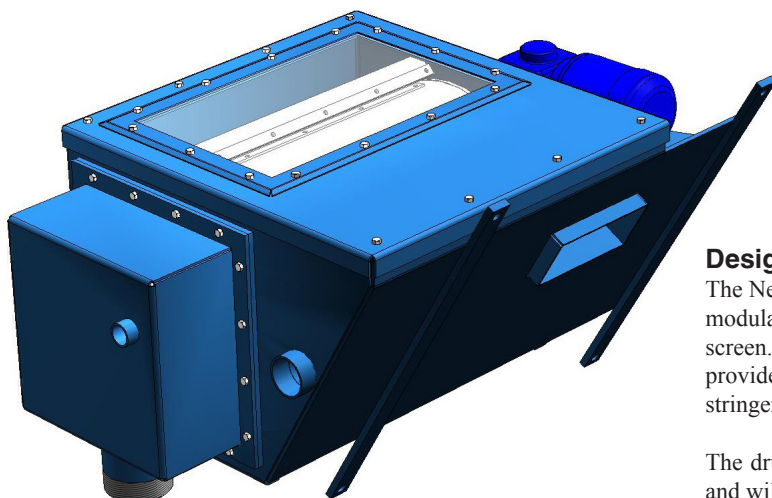


## Rotary drum filter Type FRD



### Design

The Nederman Rotary Drum filter is an integrated yet modular system that cleans coolant with a permanent rotary screen. It protects slideways and extends machine life, provides higher performance and quality. It meets ever stringent occupational and health requirements.

The drum filter is self cleaning, by means of back-flushing, and will filter the coolant down to 30-50 micron. The filtered coolant will be delivered into a clean coolant tank which will house the clean feed pump options.

- Automatic
- Versatile
- Media free
- Compact

### Function

Contaminated coolant discharges from the machine tool into the dredge tank where swarf settles out and is removed by the drag conveyor. The coolant and fine particles pass through the primary box filter modules, which are constantly wiped by the drag flights and easily removable, into the transfer area.

The coolant is pumped to the machine tool or the rotary drum filter module via a diffusing manifold, where the coolant passes through the constantly rotating mesh drum. The contamination and fines, which attract to the outside surface of the drum, are back-flushed off into the drag conveyor for removal.

The filtered coolant, which has passed, by gravity, through the drum flows into the clean storage tank which, will house the clean coolant supply pump options and a low level sensor.

A balance weir will constantly flow from clean to transfer section in normal working conditions.

A high pressure bag filter option comprising of a bag filter and a high pressure pump mounted in the clean tank. The bag filter is in line with the high pressure pump.

### Technical data

Model	Flow lpm (nominal)	Type	Width mm	Lower length mm	Discharge height mm	Article no
FRD 250	200	Drag	568	1500	1000	76243140
FRD 500	500	Drag	721	2100	1350	76243240
FRD 1000	1000	Drag	1025	2500	1500	N/A